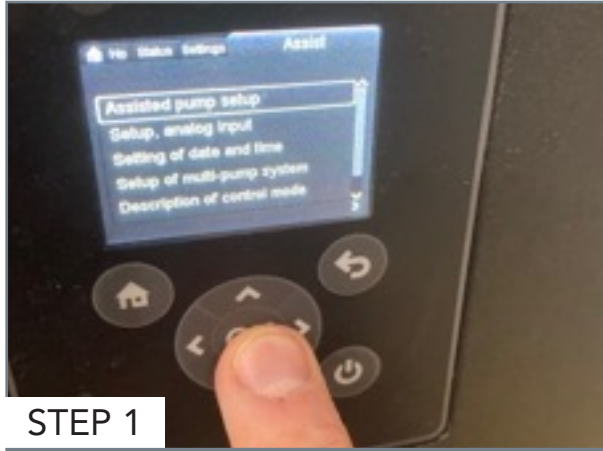
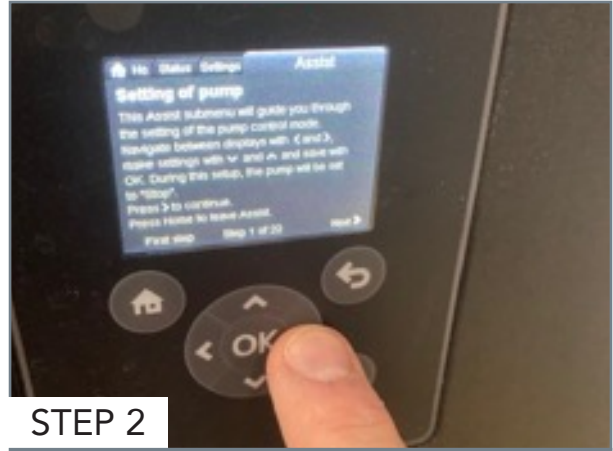


GRUNDFOS ASSISTANT PUMP SETUP PROCESS



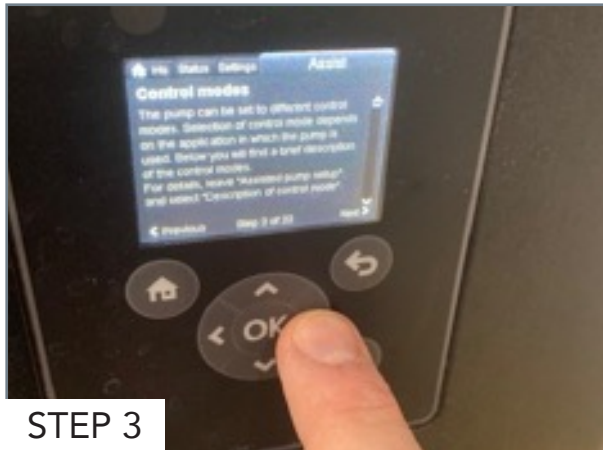
STEP 1

From your home screen, use the right arrow key to scroll over to the tab labeled Assist. Highlight "assisted pump setup" and select by pressing "OK."



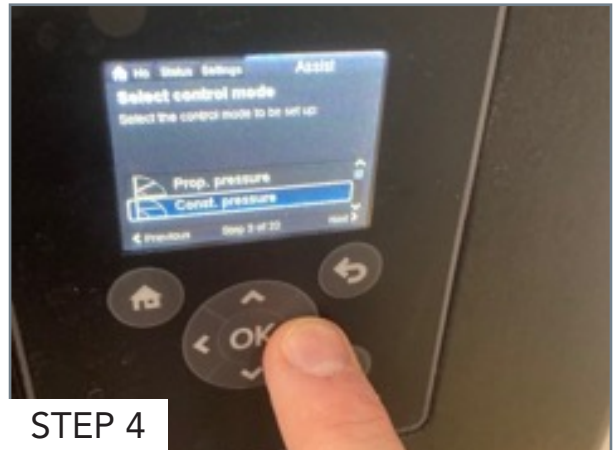
STEP 2

Inside "assisted pump setup" you will be brought to page 1 of 22. Read the page and use the right arrow key to scroll to the next page.



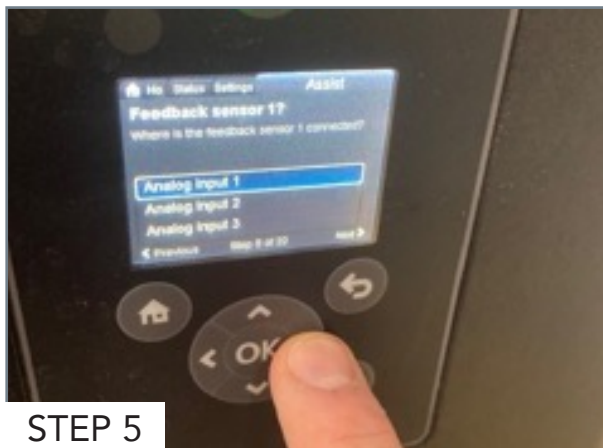
STEP 3

Control mode page, read the page and use right arrow key to move to the next page.



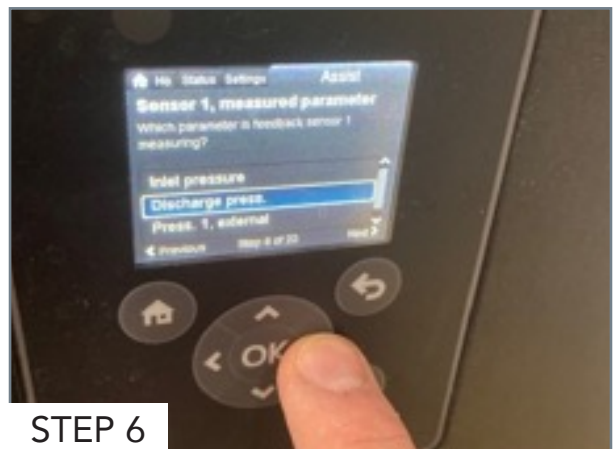
STEP 4

Confirm "Const. pressure" is highlighted blue and press right arrow.



STEP 5

Confirm "Analog input 1" is highlighted blue and press right arrow.



STEP 6

Confirm "Discharge press." is highlighted blue and press right arrow.

GRUNDFOS ASSISTANT PUMP SETUP PROCESS



STEP 7

Confirm "psi" is highlighted blue and press right arrow.



STEP 8

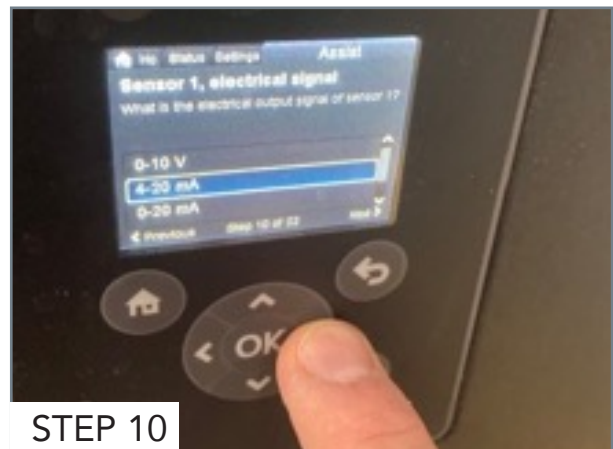
Confirm "0.0" is highlighted blue and press right arrow.



STEP 9

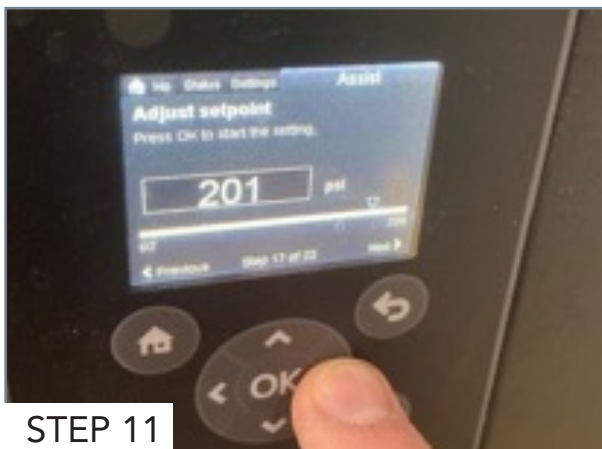
For a 20 GPM wall mounted pump, confirm "300.0 PSI" is highlighted blue and press right arrow.

****PLEASE NOTE IF YOU ARE USING 40 GPM FLOOR MOUNTED PUMP, THIS NUMBER HIGHLIGHTED SHOULD BE SET AT 363 PSI****



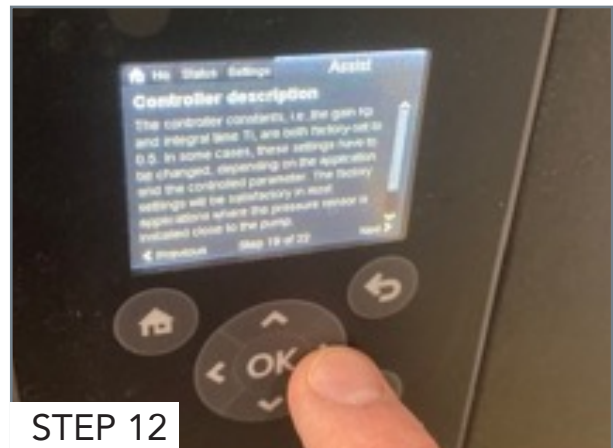
STEP 10

Confirm "4-20mA" is highlighted blue and press right arrow.



STEP 11

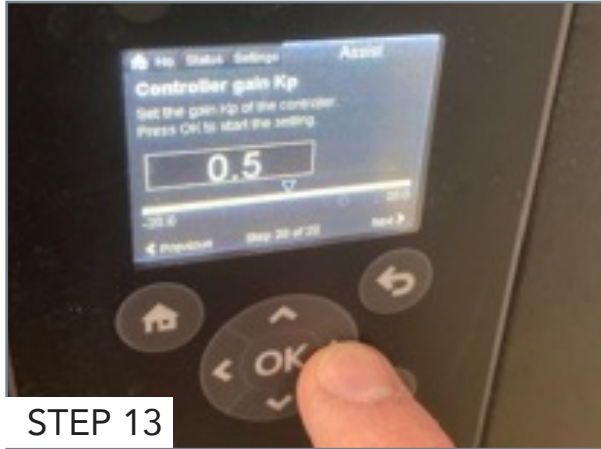
Confirm "201" is highlighted blue and press right arrow. **Please note this number may be set different for low-pressure pump applications.**



STEP 12

Read the page and press right arrow.

GRUNDFOS ASSISTANT PUMP SETUP PROCESS



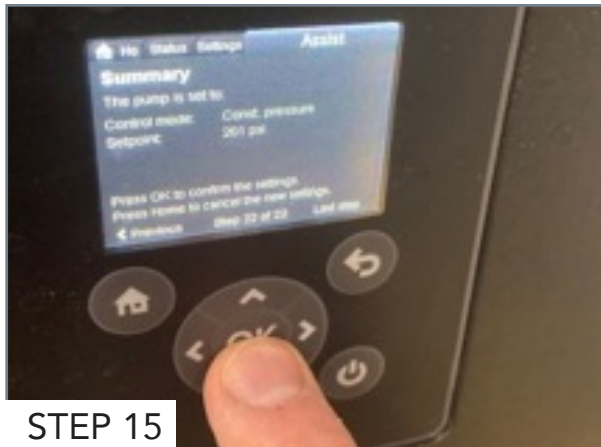
STEP 13

Confirm "0.5" is highlighted blue and press right arrow.



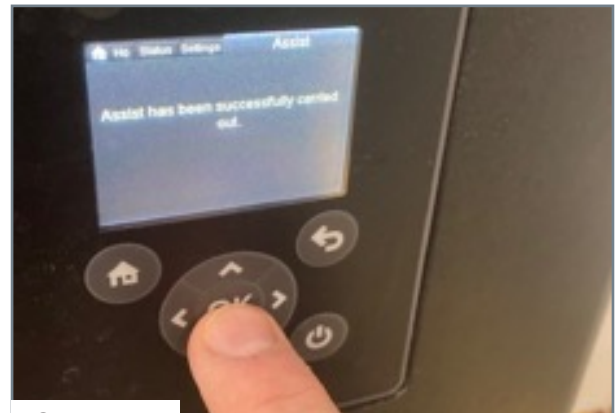
STEP 14

Confirm "1.0" is highlighted blue and press right arrow.



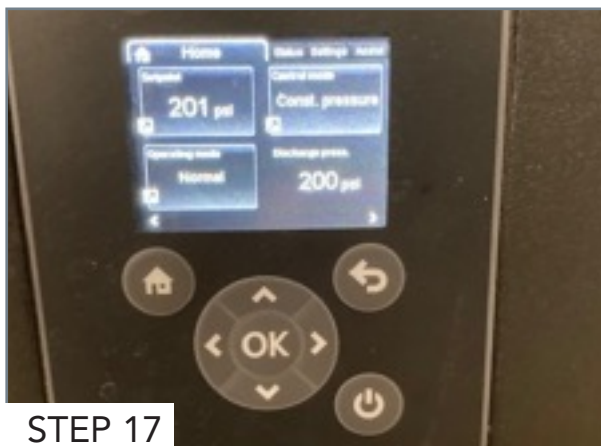
STEP 15

Read the summary and press "OK" to confirm the settings. After it is processed, press the "OK" button again.



STEP 16

Confirm the screen says, "Assist has been successfully carried out."



STEP 17

Once the assist has been successfully carried out, you should be brought back to the home screen and your pump is ready to go.



Hydra-Flex: 952-808-3640

Sonny's: 800.327.8723

hello@hydraflexinc.com

www.sonnysdirect.com